

General Description

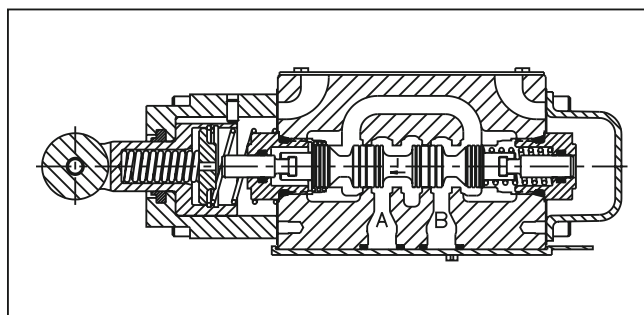
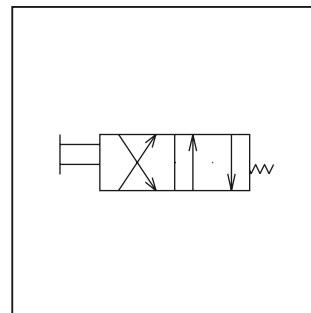
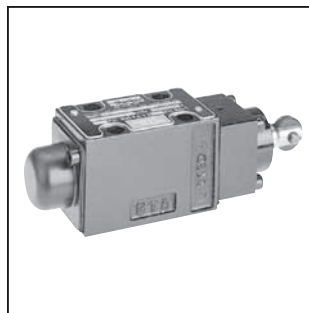
Series D1VC, D1VD and D1VG directional control valves are high performance, 4-chamber, direct operated, cam controlled, 4-way valves. They are available in 2-position and conform to NFPA's D03, CETOP 3 mounting patterns.

Features

- Choice of 2 cam roller positions (D1VC and D1VD)
- Two styles available (D1VC and D1VG)
- Short stroke option

Specifications

Mounting Pattern	NFPA D03, CETOP 3, NG 6
Maximum Pressure	Operating: 345 Bar (5000 PSI) Tank Line: 34 Bar (500 PSI)
Nominal Flow	32 LPM (8.5 GPM)
Maximum Flow	See Reference Data
Force Required to Shift	D1VC, D1VD: 107 N (24 lbs.) D1VG: 36 N (8 lbs.)
Maximum Cam Angle	30°



Ordering Information

<div style="border: 1px solid black; padding: 2px; width: 30px; margin: 0 auto;">D</div> Directional Control Valve	<div style="border: 1px solid black; padding: 2px; width: 30px; margin: 0 auto;">1V</div> Basic Valve <div style="border: 1px solid black; padding: 2px; width: 80px; margin: 5px auto; text-align: center;">NFPA D03 CETOP 3</div>	<div style="border: 1px solid black; padding: 2px; width: 30px; margin: 0 auto;"></div> Actuator	<div style="border: 1px solid black; padding: 2px; width: 30px; margin: 0 auto;"></div> Spool	<div style="border: 1px solid black; padding: 2px; width: 30px; margin: 0 auto;"></div> Style	<div style="border: 1px solid black; padding: 2px; width: 30px; margin: 0 auto;"></div> Seal	<div style="border: 1px solid black; padding: 2px; width: 30px; margin: 0 auto;"></div> Variations	<div style="border: 1px dashed black; padding: 2px; width: 30px; margin: 0 auto;"></div> Design Series NOTE: Not required when ordering.
--	--	--	---	---	--	--	--

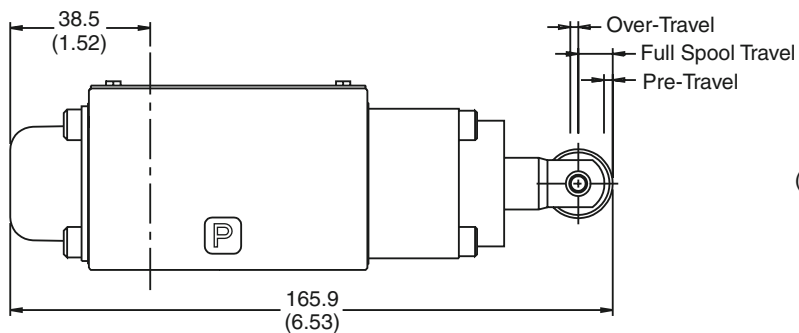
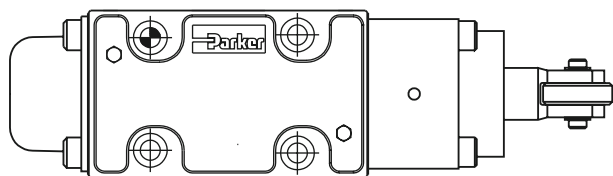
<table border="1" style="width: 100%;"> <thead> <tr> <th>Code</th><th>Description</th></tr> </thead> <tbody> <tr> <td>C</td><td>Cam (90° to mounting surface)</td></tr> <tr> <td>D</td><td>Cam parallel to mounting surface</td></tr> <tr> <td>G</td><td>Cam Lever</td></tr> </tbody> </table>	Code	Description	C	Cam (90° to mounting surface)	D	Cam parallel to mounting surface	G	Cam Lever	<table border="1" style="width: 100%;"> <thead> <tr> <th>Code</th><th>Symbol</th></tr> </thead> <tbody> <tr> <td>001</td><td></td></tr> <tr> <td>002</td><td></td></tr> <tr> <td>004</td><td></td></tr> <tr> <td>008*</td><td></td></tr> <tr> <td>009†</td><td></td></tr> <tr> <td>081</td><td></td></tr> <tr> <td>082</td><td></td></tr> </tbody> </table> <p>* 008 spool has closed crossover. † 009 spool has open crossover.</p>	Code	Symbol	001		002		004		008*		009†		081		082		<table border="1" style="width: 100%;"> <thead> <tr> <th>Code</th><th>Description</th></tr> </thead> <tbody> <tr> <td>N</td><td>Nitrile</td></tr> <tr> <td>V</td><td>Fluorocarbon</td></tr> </tbody> </table>	Code	Description	N	Nitrile	V	Fluorocarbon	<table border="1" style="width: 100%;"> <thead> <tr> <th>Code</th><th>Description</th></tr> </thead> <tbody> <tr> <td>Omit</td><td>Standard</td></tr> <tr> <td>P05</td><td>Short Stroke</td></tr> <tr> <td>P10*</td><td>Monitor Switch</td></tr> </tbody> </table> <p>* Not CE or CSA approved.</p>	Code	Description	Omit	Standard	P05	Short Stroke	P10*	Monitor Switch	<table border="1" style="width: 100%;"> <thead> <tr> <th>Code</th><th>Description</th><th>Symbol</th></tr> </thead> <tbody> <tr> <td>B</td><td>Two position, spring offset operator at "A" port end.</td><td></td></tr> <tr> <td>H</td><td>Two position, spring offset operator at "B" port end.</td><td></td></tr> </tbody> </table> <p>Valve schematic symbols are per NFPA/ANSI standards, providing flow P to A when energized. Note flow paths reverse sides for #008 and #009 spools.</p>	Code	Description	Symbol	B	Two position, spring offset operator at "A" port end.		H	Two position, spring offset operator at "B" port end.	
Code	Description																																																		
C	Cam (90° to mounting surface)																																																		
D	Cam parallel to mounting surface																																																		
G	Cam Lever																																																		
Code	Symbol																																																		
001																																																			
002																																																			
004																																																			
008*																																																			
009†																																																			
081																																																			
082																																																			
Code	Description																																																		
N	Nitrile																																																		
V	Fluorocarbon																																																		
Code	Description																																																		
Omit	Standard																																																		
P05	Short Stroke																																																		
P10*	Monitor Switch																																																		
Code	Description	Symbol																																																	
B	Two position, spring offset operator at "A" port end.																																																		
H	Two position, spring offset operator at "B" port end.																																																		

Bold: Designates Tier I products and options.

Non-Bold: Designates Tier II products and options. These products will have longer lead times.

D1.indd, dd

Inch equivalents for millimeter dimensions are shown in (**)

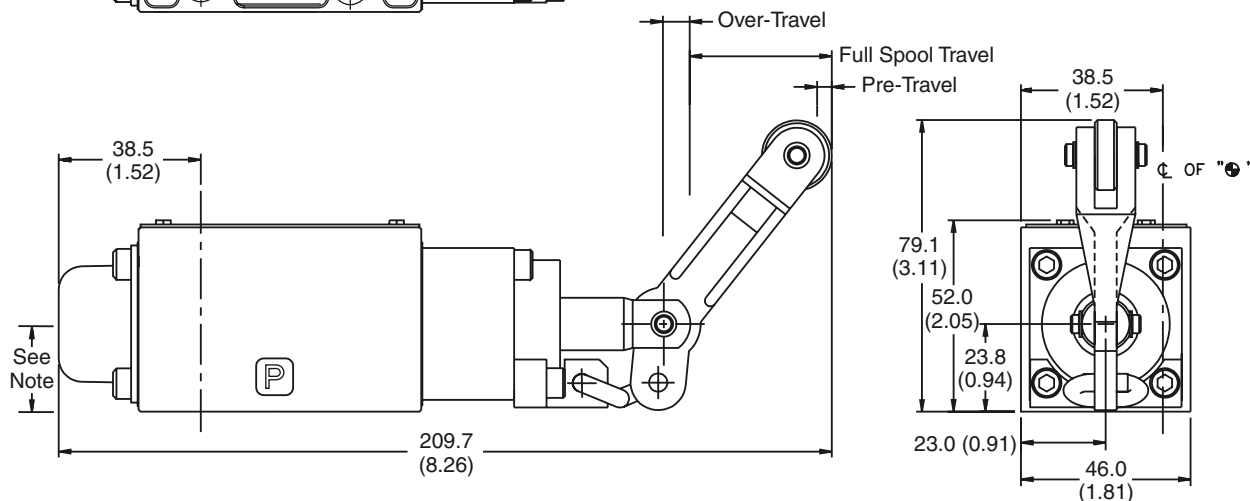
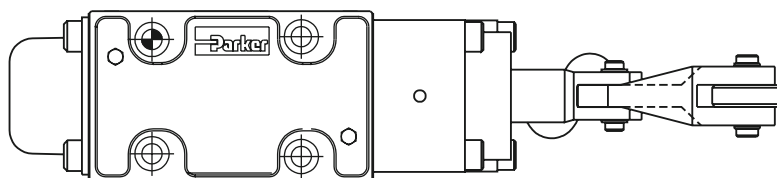
A**Cam Operated D1VC and D1VD**

Valve Type	Pre-Travel	Full Spool Travel	Over-Travel
Standard Valve	2.00 (0.079)	9.06 (0.357)	2.03 (0.080)
P05 Short Stroke	0 (0)	7.06 (0.278)	4.03 (0.159)

Note: For D1VD, Cam Rotated 90°



Note: 22.0 mm (0.87") from bottom of bolt hole counterbore to bottom of valve.

Cam Lever Operated D1VG

Note: 22.0 mm (0.87") from bottom of bolt hole counterbore to bottom of valve.

D1.indd, dd